

The newsletter for members of Clay Electric Cooperative, Inc.

# Kilowatt

July 2022

1-1915-1934 x SANTO DOMINGO 1916-1924 x WORLD WAR I 1917-1918 BELLEAU WOOD SOISSONS ST MIHIEL BLANC



IN HONOR AND MEMORY  
OF THE MEN OF THE  
UNITED STATES MARINE CORPS  
WHO HAVE GIVEN  
THEIR LIVES TO THEIR COUNTRY  
SINCE 10 NOVEMBER 1775



**Youth Tour  
returns to  
Washington**



# We have a hurricane plan — do you?

Summer is here, school is out and families are gearing up for fun and relaxation. While this time of year brings much fun in the sun, it can also bring the occasional severe storm — or worse, a hurricane. In the event of a power outage, you can trust your co-op is ready to respond.

The major cause of most power outages comes from damage to power lines due to falling trees and branches. We work year round — through right-of-way clearing — to ensure power lines in our service territory stand little risk of being damaged by trees, branches or other types of vegetation.

Despite our efforts, during severe storms, damage can occur to transmission lines, substations and power lines. When this happens, our first priority is to safely restore power to as many members as possible in the shortest amount of time.

We start by mobilizing our line crews and other critical staff. We monitor our system for known outages, view outage reports through MyClayElectric and open every phone line available to take your outage report calls. The big problems are handled first, such as damage to transmission lines, which serve tens of thousands of people. These problems must be corrected before we can focus on other areas where more localized damage may have occurred.

The co-op's line crews then inspect substations to determine if the problem starts there, or if there could be an issue down the line. If the root of the problem is at the substation, power can be restored to thousands of members.

Next, line crews check the service lines that deliver power into neighborhoods and communities. Line crews repair damaged lines, restoring power to hundreds of people. If you continue to experience an outage, there may be damage to a tap line outside of your home or business. Make sure you notify us so crews can inspect these lines.

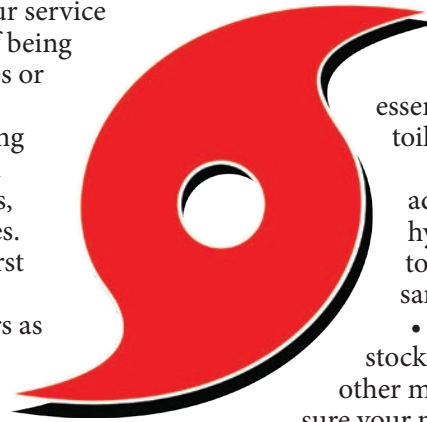
We do our best to avoid power outages, but sometimes Mother Nature has other plans. That's why you should also prepare

for storms. Your electricity may be out for several days if a tropical storm strikes our area.

The Federal Emergency Management Agency recommends the items below as a starting point for storm and disaster preparedness, but you can visit [www.ready.gov](http://www.ready.gov) for additional resources.

- Stock your pantry with a three-day supply of non-perishable food, such as canned goods, energy bars, peanut butter, powdered milk, instant coffee, water and other essentials (i.e., diapers and other toiletries).
- Confirm you have adequate sanitation and hygiene supplies, including towelettes, soap and hand sanitizer.
- Ensure your First Aid kit is stocked with pain relievers and other medical essentials, and make sure your prescriptions are current.
- Set aside basic household items you will need, including flashlights, batteries, a manual can opener and portable, battery-powered radio or TV.
- Organize emergency supplies so they are easily accessible in one location.
- In the event of a prolonged power outage, turn off major appliances, TVs, computers and other sensitive electronics. This will help avert damage from a power surge, and will also help prevent overloading the circuits during power restoration. That said, do leave one light on so you will know when power is restored. If you plan to use a small generator, make sure it's rated to handle the amount of power you will need, and always review the manufacturer's instructions to operate it safely.

I hope we do not experience hurricanes this year, but there is power in planning. Advance planning for severe storms or other emergencies can reduce stress and anxiety caused by the weather event and can lessen the impact of the storm's effects. Sign up for NOAA emergency alerts and install the MyClayElectric app to your phone to stay abreast of restoration efforts and other important news and information about your cooperative.



Ricky Davis  
General Manager

## Kilowatt

Vol. 53, No. 4, July 2022 (USPS 783-900; ISSN 1087-4747) is published by the Member & Public Relations Department of Clay Electric Cooperative, Inc., Highway 100 West, Keystone Heights, Florida, 32656. Subscription \$1 per year to co-op members. Periodicals postage paid at Keystone Heights, Fla. and at additional mailing offices.

Justin Caudell, editor  
jcaudell@ClayElectric.com

Postmaster:  
Send address changes to  
Kilowatt  
PO Box 308  
Keystone Heights, FL 32656



## Students make lasting memories in Washington

After a two-year absence due to the COVID-19 pandemic, Clay Electric's Youth Tour participants enjoyed a visit to Washington, D.C. June 14-18.

When they arrived in Washington, the junior high school students joined a larger group from Florida to begin touring monuments, museums, legislative buildings and historic landmarks. They were accompanied by Pat Mundorff, member relations representative for the Keystone Heights District.

Students from 11 Florida electric cooperatives participated and visited the Capitol, White House, 9/11 Memorial at the Pentagon, George Washington's Mount Vernon, Smithsonian museums, Holocaust Museum, war memorials and many other historic sites. A trip highlight was students visiting with their elected representatives to learn first-hand about the legislative process.

Since 1964, the nation's electric co-ops have sponsored more than 50,000 high schoolers for visits to their U.S. congressional delegations, energy and grassroots government sessions, and sightseeing in Washington, D.C. Each year, 26 area juniors are selected by their schools within the 14 counties served by Clay Electric. In February, all 26 visited Tallahassee to visit state landmarks and the Capitol. While there, they took

"I learned quite a bit about American history, especially seeing monuments and artifacts in real life and really getting to soak in their significance."

— Cat Kivett-Smith

a written quiz and participated in a speech contest to compete for the Washington, D.C. trip.

This year's winners of Clay's Youth Tour to Washington trip contest were: Shannon Hodges of St. Johns Country Day School, Abby Luck of Fleming Island High School, Cat Kivett-Smith of Ridgeview High School and Olivia Votava of Oakleaf High School.

The students expressed gratitude for being selected to go on the trip and said the entire experience provided them with many new experiences and learning opportunities.

"I learned quite a bit about American history, especially seeing monuments and artifacts in real life and really getting to soak in their significance," Kivett-Smith said. "Particularly interesting was the African-American museum for its rich history and introduction to varying topics."

Luck said she learned a lot while in

D.C., including how cooperatives work together for a greater goal and electricity reshaped America.

"The most memorable part of Youth Tour was the Holocaust Museum," she said. "I felt very connected and you could tell others were, too."

The students also had fun and were able to build new friendships with Youth Tour participants from other states.

"Doing the 'cha-cha slide' in front of the White House was my favorite part," Votava said. "The dinner cruise was also memorable. I made friends and got to dance with them."

"Hanging out at the end of the night and laughing about the day was also fun," Luck added.

### Abby selected to serve on Youth Leadership Council

During Youth Tour, Abby Luck was selected to represent the State of Florida on the National Rural Electric Cooperative Association's (NRECA) Youth Leadership Council. She earned the honor after an application process that included a speech and interview.

Members of the council will reunite in D.C. to build leadership and public speaking skills, and to enhance their knowledge of the energy industry and the cooperative form of business.



# Supply chain issues could impede restoration

Another possible above-average hurricane season and a low inventory of electrical equipment could pose a double threat to the timely restoration of electric service after storms this year.

Clay Electric and other utilities have been coping for more than a year with supply chain bottlenecks attributed to the COVID-19 pandemic and a spate of natural disasters. Utilities have also been fighting with soaring material and commodity prices, with the cost of steel, copper and petroleum-based items, and natural gas rising since the pandemic began.

“Our employees have been working hard with suppliers to ensure we maintain a sufficient level of inventory of materials, but keeping essential parts flowing is getting more challenging and expensive,” said General Manager/CEO Ricky Davis. “We have been receiving letters for some time now from manufacturers and their representatives about lead time extensions, price increases, shipping delays and production curtailments.”

Troubles began in early 2020 as the pandemic forced many manufacturers to reconfigure their plants to accommodate social distancing, which slowed production, packaging and shipping, and deliveries.

A recent report from North American Electric Reliability Corp. concluded several states, including Florida, are facing reliability risks this summer because of extreme weather and supply shortages.

“When our area was hit by several storms in the early to late 2000s, equipment was readily available,” Davis said. “We hope the supply chain improves and we do not have hurricanes, but we all need to be prepared and have a storm plan. If electricity is a necessity for you or someone you know, please make arrangements now to have somewhere to go if a hurricane is an imminent threat.”

To help ease some of the pain for electric utilities, President Joe Biden recently signed orders allowing the Department of Energy to use the Defense Production Act in order to help manufacturers increase their output of transformers. This was



a move the National Rural Electric Cooperative Association said was necessary to meet demand in fast-growing areas of the country and for power restoration after storms and other disasters.

“For several months, America’s electric cooperatives have raised serious questions about supply chain disruptions to materials necessary for reliable operation of the nation’s electric infrastructure,” NRECA CEO Jim Matheson said in a statement. “The Biden administration’s use of the Defense Production Act to shorten lead times for supplies of electric transformers is a much-needed step to support reliability and resilience.”

Matheson said NRECA will continue to work with policy-makers on “additional measures” that will help ensure that co-op members’ lights stay on at a price they can afford.



Report an outage or damage on  
Clay Electric’s lines by using our  
mobile app or by logging in at:

**MyClayElectric.com**

You can also call:

**1-888-434-9844**

For life-threatening situations,  
call **911**.

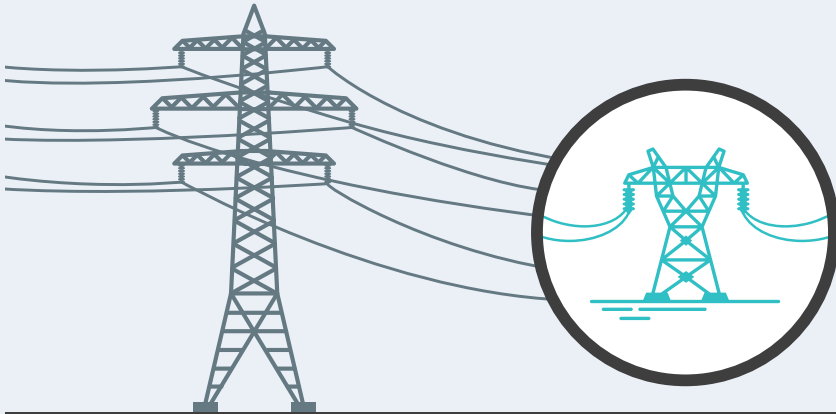
See our outage map at  
**outagemap.clayelectric.com**

Find us on 

facebook.com/ClayElectric

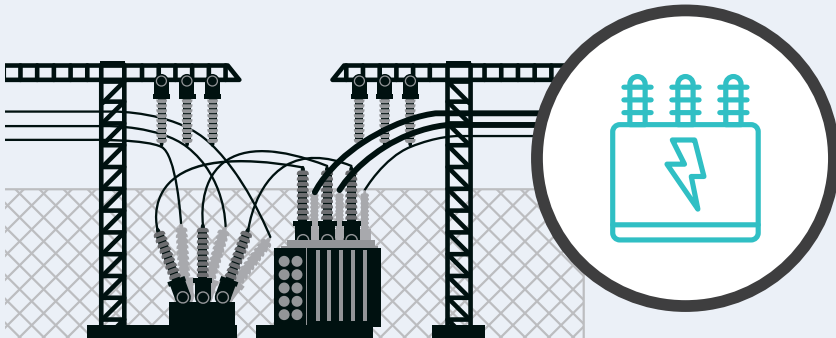
# The Steps to Restoring Power

When a major outage occurs, our crews restore service to the greatest number of people in the shortest time possible - until everyone has power.



## 1. High-Voltage Transmission Lines

These lines carry large amounts of electricity. They rarely fail but must be repaired first.



## 2. Distribution Substations

Crews inspect substations, which can serve hundreds or thousands of people.



## 3. Main Distribution Lines

Main lines serve essential facilities like hospitals and larger communities.



## 4. Individual Homes and Businesses

After main line repairs are complete, we repair lines that serve individual homes and businesses.

The Clay Electric Foundation Board of Directors approved

**\$155,342 IN GRANTS**

during its June and July meetings.

**Christian Service Center of Columbia County, Inc. (Columbia County) \$7,500**

The Christian Service Center is a nonprofit serving the residents of Columbia County since 1984. The scope of assistance provided includes food, clothing, gas assistance, bus tickets, utility bills, emergency lodging and prescription assistance to about 10,000 clients per year. The grant funds will be used for the Christian Service Center's Client Assistance Program to help residents with their utility bills.

**St. Phillips Lodge #55 (Alachua County) \$1,500**

St. Phillips Lodge #55 is part of the Masonic organization and offers community service projects such as Adopt a Family, Unity in the Community, back-to-school supply giveaways and youth football sponsorships. Funds will be used to support the annual back-to-school supply giveaway.

**Camp Boggy Creek (All Counties) \$10,000**

Camp Boggy Creek, located in Eustis, was founded in 1996 by Paul Newman and General H. Norman Schwarzkopf to make it possible for children with serious illnesses to enjoy a camp experience in a safe, medically-sound environment. Funds from the grant will be used to send four campers to the camp's summer sessions.

**10 Can, Inc. (All Counties) \$10,000**

This organization is an outdoor ministry for military families. They rehabilitate wounded warriors by strengthening the foundation of their family. This is done through outdoor recreational therapy, creating outdoorsmen and providing wilderness experiences for urban families. Grant funds will be used to support the Reel Healing program.

**Santa Fe College Foundation (Alachua County) \$15,000**

The Santa Fe College Foundation inspires, cultivates and assists private donors to enrich Santa Fe College students and the community through scholarships, program enhancements and facilities support. Grant funds will support the Veterans Bridge Scholarship to help our veterans transition from the military to school.

**Kristi Overton Johnson Ministries (All Counties) \$5,000**

Kristi Overton Johnson Ministries' mission is to encourage, equip and empower people to live victorious lives, especially within the prison system. Grant funds will be used to support the Victorious Living Prison Outreach program.

**Mt. Carmel Community Resource Center, Inc. (Putnam County) \$4,425**

Mt. Carmel Community Resource Center is a food pantry that has served Palatka since 2002. Funding from the grant will be applied to the replacement of the facility's air conditioner.

**Altrusa International of Lake City, Inc. (Columbia, Baker, Suwannee counties) \$7,500**

Altrusa is an international nonprofit making local communities better through leadership, partnership and service. Grant funds will go toward the Backpack Project, which provides weekend meals for underprivileged children.

**Southeastern Guide Dogs (All counties) \$5,000**

Southeastern Guide Dogs transforms lives by creating and nurturing extraordinary partnerships between people and dogs, throughout the United States. The nonprofit trains dogs of the highest pedigree for people who are blind, veterans, and children, providing premier dogs and lifetime services at no cost. Grant funds will be applied to the Enhanced Alumni Support program to relieve individuals of the cost of having a working dog.

**Unity Family Community Center (Levy County) \$10,548**

Unity Family Community Center, located in Williston, seeks to improve the quality of life of families and individuals by providing services and opportunities designed to create change, such as health initiatives, social services and economic development programs. Grant funding will be used to expand the afterschool program to include hands-on STEAM activities.

**Children's Home Society (Putnam County) \$3,869**

Children's Home Society of Florida is dedicated to breaking the tragic cycle of child abuse and neglect. Funds from the grant will provide the students at Wilkinson Jr. High School with access to a laundry facility in an effort to reduce school absences.

**Open Arms Village (Marion County) \$10,000**

The Open Arms Village exists to create a safe

community that treats homeless individuals with dignity and provides for their basic needs. The program provides a full array of programs and services that clients can use to move themselves toward independence. Grant funds will support the development of an outdoor recreation area for the homeless shelter.

**Melrose Volunteer Fire Department (Alachua, Bradford, Clay, Putnam County) \$5,000**

The Melrose Volunteer Fire Department serves surrounding counties for fire protection and medical responders in emergencies. Grant funds will be applied to the purchase of safety equipment.

**The Food Pantry of Green Cove Springs (Clay County) \$15,000**

The Food Pantry is an all-volunteer organization that provides Clay County with emergency food for families and individuals in need. Funds from the grant will be used to purchase nonperishable food items.

**Alachua Habitat for Humanity (Alachua County) \$15,000**

Habitat for Humanity assists low income and very low-income families in obtaining decent and affordable housing by building homes using volunteer labor. Grant funds will be applied to the home ownership program.

**Haven Hospice Foundation (All counties) \$15,000**

Haven Hospice is a not-for-profit, community hospice organization providing comprehensive services for end-of-life and palliative care. Grant funds will help to supply educational videos and translation services to provide caregivers easily understood instructions for taking care of patients.

**Florida Sheriffs Youth Ranches (All counties) \$15,000**

The mission of the Florida Sheriffs Youth Ranches is to prevent delinquency and develop lawful, resilient and productive citizens. Grant funds will be used to purchase school uniforms for youth residents.

**Interested in applying for a grant?**

The goal of Operation Round Up is to address the charitable needs and provide financial assistance to improve the quality of life in the fourteen (14) counties Clay Electric Co-op serves. For more information on the program, see all of the organizations that have received a grant, or to download a grant application, visit ClayElectric.com.





Santa Fe College Foundation



## Golden layer cake

### Ingredients:

- 1 20-oz can crushed pineapple in juice
- 1 8-oz carton whipped topping
- 1 4-serving size pkg instant vanilla pudding
- 1 16-oz pkg frozen pound cake, thawed
- 1/3 c almond-flavored liqueur (or 1/3 c pineapple juice and 1/2 tsp almond extract)
- Optional garnish: sliced pineapple, 1/4 c sliced almonds, toasted

### Instructions:

Combine undrained pineapple, whipped topping and pudding mix. Let stand 5 minutes. Cut cake lengthwise in thirds. Drizzle with liqueur. Spread one-third pudding mixture over bottom layer of cake. Top with second layer. Repeat layering, ending with pudding. Chill 30 minutes. Sprinkle with almonds and garnish with pineapple slices, if desired.



## CLAY ELECTRIC BOARD OF TRUSTEES

Meets at noon Thursday, July  
28 and Thursday, Aug. 25 in  
Keystone Heights.

**Carl Malphurs** - President  
Alachua - District 4  
**Karen Hastings** - Vice President  
Citra - District 9  
**Kelley Smith** - Secretary  
Palatka - District 2  
**Dewitt Hersey** - Treasurer  
Starke - District 5  
**Carl Hagglund** - Trustee  
Keystone Heights - District 1  
**Susan Reeves** - Trustee  
Hawthorne - District 3  
**Jimmy Wilson** - Trustee  
Middleburg - District 6  
**John Whitehead** - Trustee  
Lake Butler - District 7  
**Jo Ann Smith** - Trustee  
Micanopy - District 8

**Ricky Davis**  
General Manager & CEO

### EXECUTIVE STAFF

**Bryan Gunter**  
Chief Operations Officer  
**Chris Bryan**  
Chief Engineer  
**Mark Maxwell**  
Chief Financial Officer  
**Derick Thomas**  
Chief Public Relations Officer  
**Justin Williams**  
Chief Officer of Corporate Services  
and Human Resources  
**Toby Moss**  
Chief Information Officer  
**Cheryl Rogers**  
Chief Audit Officer

### DISTRICT MANAGERS

**Troy Adams**  
Gainesville & Lake City  
**Dale Furlong**  
Keystone Heights  
**Andy Chaff**  
Orange Park  
**Derek Hembree**  
Palatka & Salt Springs

### COMMUNICATIONS

**Kathy Richardson**  
Manager of Communications

  
**Clay Electric Cooperative, Inc.**  
A Touchstone Energy® Cooperative

# The Trading Post

Submit your ad by emailing it to  
TradingPost@ClayElectric.com  
or sending it to Clay Electric, PO  
Box 308, Keystone Heights, FL  
32656. For more ads, visit Clay  
Electric.com

**LAKEFRONT HOME FSBO.** 4/3, 2,481 sf, 1.22-acre lot on Spring Lake. 6153 County Road 352, Keystone Heights, FL 32656. Sale price: \$405,000 (appraised at \$415,000). See all the features & photos: [www.ddtie.com](http://www.ddtie.com). 352-213-9778 Jumps

**CONTINENTAL TIRES** 275/60 R 20. New (less than 50 miles). Set of 4. \$650. Landa Hotshot 4-2000 Pressure Washer. 240v 50amp. \$950. Farm Field Roller. Water filled heavy duty. 14' wide w/12' drum. Takes big tractor to pull. Call to discuss moving. \$1,500. Swivel Metal Cutting Band saw w/table. \$400. Sunstar ZX 32 Tanning Bed - 1373 hrs. New lamps installed at 1331 hrs. 240v. Many more items. 904-903-0093 Oden

**TRI-FOLD TONNEAU** cover for 8' bed, \$150. 2 wood bar stools w/leather covered seats, lightly used, \$50 ea. 2 metal bar stools w/swivel & suede covered seats, lightly used, \$70 ea. Lv msg. 352-289-5004 Lutton

**1994 FORD F150 2WD** Auto 4.9 Excab long bed, 140K. Photos upon request through text. 386-538-0253 Kammerer

**GOOD 27" MOTORHOME.** \$10,000. Beautiful rollout desk, \$600. New bunkbed, \$200 obo. 352-414-8885 Bringman

**2012 SUZUKI** 800 Trike. Exc cond w/less than 3K miles. \$10,000. 352-362-032 Farnsworth

**BODYGUARD U-45** exercise bike. Barely used, great bike. Upgraded to Peloton+. Exercise bike in exc cond, a must see to believe. Only had it for a year, ridden only a few times. Bike cost \$1,100, will sell for \$450 obo. Need space! This bike does everything you need & doesn't need any power, power generated when you start pedaling. Middleburg. 904-305-9480, r4448@bellsouth.net Redfield

**FALL BORN** quality club steers & heifers, haltered, Simmental x Maine x Angus crosses, \$1,000 up. Winning legacy, Sim-Angus bulls 2 yr, \$2,000 up. 386-365-6765 Robinson

**SCUBA GEAR.** Best offer accepted. 386-244-8173 Brock

**VIBURNUM:** lg 3 gal \$10 ea./min 5. Citra area. 352-591-1374 Personett

**INNOVA INVERSION TABLE,** like new. Bought it about a yr ago when had back issues. It really helped. Probably cost \$150 or so. Need the space it takes up. \$90, could deliver to 50-mile radius from Melrose for \$100 total. Tom. 352-481-3322 Prah

**HUSQVARNA 48.** Good working cond, reg maintained, recently tuned new battery, YTH24V48 Briggs and Stratton 440000 engine, \$2,500 new. Act now & get a free Husqvarna push mower (as is condition, runs but needs care) & what we have stock in belts & tuneup stuff for both mowers, \$795. 40' tiny house made from shipping container. 1/1 fully furnished, kitchen w/stove. Like new, call for photos. Great for Airbnb, family cottage or to live in. \$99,500. Steven. 727-692-6352, tokoindo@hotmail.com Schell

**SURGE WATTS** 6875w 7gal fuel tank voltage 120/240 amps 45.8/22.9 plus power cord set 20'; \$75 value, incl also 5 gal fuel tank less than 20

hrs, but carburetor needs cleaning to start. \$350. 904-403-3189 Riffel

**2008 17KW HOME GENERATOR.** Needs mother board. Switch box included. \$2,000. 904-334-5128 Holcom

**FURNITURE, LINENS,** China, whatnots, lamps, clothes - men, women, kids - toys, appliances, antiques, collectibles. Call to see if we have what you want. 904-264-3788 Vanzant

**FREEZER, MAYTAG.** 14 cubic ft, frost free. \$100. You move it. 904-625-7863 Coleman

**CRAFTSMAN 12"** 2-speed band saw. 1-1/8 hp with tilt head. Model 113.248321. \$75. 386-965-0648 Hildman

**CAT RP5500 GENERATOR.** 6875 starting watts, 5500 running watts. Exc cond. Has 45 run time hrs on it. Continuous running time at 100% load is 10.5hrs on a tank of gas. Have owner's manual. \$300. 904-291-8934 Mohr

**HOT TUB.** 2002 Watkins Bengal M, 330 gals. New jet pump & heater pump. Works very well. Retractable cover. Some chemicals included. \$1,400. Raiford. 702-767-4233 Rhine

**ROOF TOP** car carrier, black, good cond, sturdy, great for travel & hauling; 39"x64". 4 LED lights, stored inside & local to Keystone area, must see to decide, then you haul. \$125. Lv msg. 352-478-9625 Campbell

**FARM GATES:** 19 used gates 14'W x 8'H covered w/2x4 hog panels. \$250-\$400 ea depending on cond. Some 3 yo, some older. Call Jeff. 904-522-1314 Bodden

**WALK IN TUB** & shower, lightly used. Photos available. \$4,500. Call Mike. 904-504-5414 Donaldson

**ECHO GRASS TRIMMER,** clean, runs good, \$70. Ladies Schwinn bike, exc cond, 26x1.95 tire size, cost \$135, sell \$60. SS kitchen sink, Quality by Fuentes Consentino, double basin undermount 1263185for granite kitchen top, inc drain baskets, good cond, \$50. Racor water separator filter assembly w/fittings for gas or diesel engines, cost \$160, sell \$70. Much more. 904-602-5098 Moran

**REMINGTON WOODMASTER** rifle, model 742 30:06 w/Bushnell 3-9 scope sling & 3 clips, vg cond, \$400. Spare tire & rim for Kia Soul, new, \$400x800, \$40. 352-625-1851 Bass

**JAZZY MOBILITY** scooter, \$1,500. Worx hedge trimmer, new, \$75. Window AC, 500 BTU, \$100. 28" Sharp TV, \$75. Maria. 386-747-7166 Perez

**CJ-7 HARDTOP,** no glass or liftgate, some repair necessary. Also hard doors w/complete set of NOS seals & gaskets, \$700. Warn 8274 winch, \$1,200. 352-475-2305 Allen

**LIKE NEW** Lazy Boy loveseat recliner. 63L, 37H, 37W. Manual operation. \$500. Used blue chair. This chair rocks. Good cond, \$30. Used bedroom set, queen headboard, footboard & frame, dresser, mirror, chest & nightstand, good cond, cherry wood, \$400. Call or text. 386-972-3416 Devine

**14' STUMPKNOCKER** w/trailer, new tires and wheels, trolling motor w/o gas powered motor, \$1500. 352-672-0835 Lewis

**MH W/12x20** workshop w/elec on 3.25 ac lots on Buckhorn Lake. Fenced. Marion County. Lv msg. 954-415-5631 Mendelson

**PLYWOOD: 1/2"x4'x8'** - 2 pc; 1/2"x4'x7' - 1 pc; 3/8"x4'x7'6" - 2 pc; 3/8"x3'x8' - 1 pc. Hurricane window covering vg cond, \$150. Bostwick. Dennis. 904-540-4399 Pacetti

**PETER WRIGHT** anvil, 101 lbs; made after 1910, vg cond, \$500. Antique paper towel dispenser, APW Paper Company, Albany, NY; all brass; The Onliwon, Pat. Date Jan. 16, 1906, \$200. 386-755-3905 Kemp

**ALUMINUM HOLLOW** pole, 18 feet long, 3 inches in diameter increasing to 4 inches at the other end. \$75. Kay. 352-339-8498 Allison

**GENERAC PORTABLE** Generator RS 5500 Power Dial Series, \$400. Near new condition & comes w/2 power cables. One for whole house power & the other for multiple extension cords. Owner's manual included. Frank. 904-264-2439 James

**BASIC 12"** L x 4" H x 8" D concrete retaining wall blocks, reddish color, well used but perfect for retaining walls. Have 200 left. \$1 ea w/min of 20. If you want all 200 - \$175 cash. SW Gainesville. Bill (lv msg). 352-281-3718 Stengle

**BOWFLEX TREAD** Climber, TC 3000 exc cond, all paperwork, \$500. Call, will text photo. Lawtrey. 904-626-8021 Davis

**2 SADDLES,** 2 bridles, 2 blankets, other horse stuff. 2 portable air conditioners, almost new. 904-864-6988 Castle

**POWERSTROKE SUBARU** 3100 PSI electric start pressure washer (still in box), \$325. Echo E5-250 165 mph leaf blower/vacuum, still in box, \$215. STIHL MS462C, never used, \$950. Taylor guitar \$500 & a couple older guns Winchester M-55 30-30 cal. \$800. Donnie. 904-282-8866 Brown

**AMISH FORECART.** For 1 or 2 horses. Used field harness, collars & headstalls. Saddles - Child Western Saddle, Western Youth Saddle, Western Stock Saddle & English Saddle. Call Frank. 352-256-2372 Dickerson

**BISSELL CROSSWAVE** cordless max 2554 series, \$200. 904-947-0826 Tuscano

**BURIAL PLOTS.** Crosby Lake Cemetery, 4 plots, \$600 ea. 352-222-4340 Hinson

**GAZELLE T4 HUB** tent. Sets up/takes down in 90 sec. Sleeps 4 w/room for gear. Orange, 78" tall. Used only once, clean, no damage. Paid \$400, asking \$200. Text Craig. 352-226-7094 Walters

## Scripture

As in water face  
answereth to face, so  
the heart of man to  
man.

Proverbs 27:19