

Power Line

YOUR CO-OP NEWS | JUNE 2026

Report from
the manager

Andy Chaff

GM/CEO



Help us restore your power faster

If there's one thing we can't control, it's Mother Nature. Hot, muggy summer weather often brings thunderstorms, lightning and strong winds that can send limbs — or even entire trees — into power lines. While Clay Electric works year-round to manage vegetation and strengthen the system, a few simple steps from members can help us restore power more quickly when storms hit.

Up-to-date account information

Confirm that we have your current phone number and email address so we can reach you with outage updates and estimated resoration times.

Emergency access

If your property is gated, please make sure our crews can access it during an emergency. Providing access codes or keeping gates unlocked when safe to do so can save valuable time when crews are working to restore power.

SMS notifications

Turn on SMS notifications through MyClayElectric to receive real-time outage updates, including restoration estimates and confirmation when power has been restored. Text notifications also help us alert you about planned outages.

Keep meters clear

Keep the area around your electric meter clear of obstructions so crews can safely and efficiently access your equipment.

These steps make all the difference when storms hit. We appreciate your help in keeping the system resilient.

BOARD MEETINGS

Clay Electric Cooperative's Board of Trustees will meet at the headquarters building in Keystone Heights at 11 a.m. (or shortly thereafter) on June 25, July 30 and Aug. 27.

ClayElectric.com

800-224-4917

Power Line

YOUR CO-OP NEWS | JUNE 2026

Report from
the manager

Andy Chaff

GM/CEO



Help us restore your power faster

If there's one thing we can't control, it's Mother Nature. Hot, muggy summer weather often brings thunderstorms, lightning and strong winds that can send limbs — or even entire trees — into power lines. While Clay Electric works year-round to manage vegetation and strengthen the system, a few simple steps from members can help us restore power more quickly when storms hit.

Up-to-date account information

Confirm that we have your current phone number and email address so we can reach you with outage updates and estimated resoration times.

Emergency access

If your property is gated, please make sure our crews can access it during an emergency. Providing access codes or keeping gates unlocked when safe to do so can save valuable time when crews are working to restore power.

SMS notifications

Turn on SMS notifications through MyClayElectric to receive real-time outage updates, including restoration estimates and confirmation when power has been restored. Text notifications also help us alert you about planned outages.

Keep meters clear

Keep the area around your electric meter clear of obstructions so crews can safely and efficiently access your equipment.

These steps make all the difference when storms hit. We appreciate your help in keeping the system resilient.

BOARD MEETINGS

Clay Electric Cooperative's Board of Trustees will meet at the headquarters building in Keystone Heights at 11 a.m. (or shortly thereafter) on June 25, July 30 and Aug. 27.

ClayElectric.com

800-224-4917

Power Line

YOUR CO-OP NEWS | JUNE 2026

Report from
the manager

Andy Chaff

GM/CEO



Help us restore your power faster

If there's one thing we can't control, it's Mother Nature. Hot, muggy summer weather often brings thunderstorms, lightning and strong winds that can send limbs — or even entire trees — into power lines. While Clay Electric works year-round to manage vegetation and strengthen the system, a few simple steps from members can help us restore power more quickly when storms hit.

Up-to-date account information

Confirm that we have your current phone number and email address so we can reach you with outage updates and estimated resoration times.

Emergency access

If your property is gated, please make sure our crews can access it during an emergency. Providing access codes or keeping gates unlocked when safe to do so can save valuable time when crews are working to restore power.

SMS notifications

Turn on SMS notifications through MyClayElectric to receive real-time outage updates, including restoration estimates and confirmation when power has been restored. Text notifications also help us alert you about planned outages.

Keep meters clear

Keep the area around your electric meter clear of obstructions so crews can safely and efficiently access your equipment.

These steps make all the difference when storms hit. We appreciate your help in keeping the system resilient.

BOARD MEETINGS

Clay Electric Cooperative's Board of Trustees will meet at the headquarters building in Keystone Heights at 11 a.m. (or shortly thereafter) on June 25, July 30 and Aug. 27.

ClayElectric.com

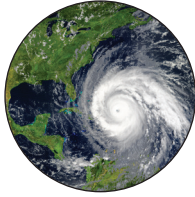
800-224-4917

Download 2026 Hurricane Preparedness Guide

June marks the official start of hurricane season, and the 2026 **Hurricane Preparedness Guide** is here.

Colorado State University forecasters expect a slightly below-average season, but still predict 13 named storms, including six hurricanes.

It only takes one. Download the guide at **ClayElectric.com/storm-center** or scan the QR code:

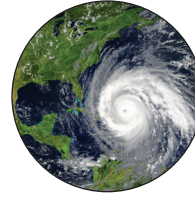


Download 2026 Hurricane Preparedness Guide

June marks the official start of hurricane season, and the 2026 **Hurricane Preparedness Guide** is here.

Colorado State University forecasters expect a slightly below-average season, but still predict 13 named storms, including six hurricanes.

It only takes one. Download the guide at **ClayElectric.com/storm-center** or scan the QR code:

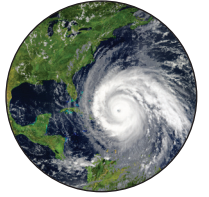


Download 2026 Hurricane Preparedness Guide

June marks the official start of hurricane season, and the 2026 **Hurricane Preparedness Guide** is here.

Colorado State University forecasters expect a slightly below-average season, but still predict 13 named storms, including six hurricanes.

It only takes one. Download the guide at **ClayElectric.com/storm-center** or scan the QR code:



MyClayElectric is the shortcut

Still using the website from your phone? The **MyClayElectric** app makes the everyday stuff easier — paying your bill, reporting an outage, checking service status and keeping up with account updates. It's the same account access, just quicker to reach when you need it.

Download it from your app store.



MyClayElectric is the shortcut

Still using the website from your phone? The **MyClayElectric** app makes the everyday stuff easier — paying your bill, reporting an outage, checking service status and keeping up with account updates. It's the same account access, just quicker to reach when you need it.

Download it from your app store.



MyClayElectric is the shortcut

Still using the website from your phone? The **MyClayElectric** app makes the everyday stuff easier — paying your bill, reporting an outage, checking service status and keeping up with account updates. It's the same account access, just quicker to reach when you need it.

Download it from your app store.



Don't wait: GenerLinks in stock

Now is the best time to secure a **GenerLink** transfer switch, which is in high demand during the summer months, and yes, supplies are limited.

GenerLink provides a quick, safe and easy way to connect a portable generator directly to your electrical system, without extension cords or unsafe backfeeding.

Give us a call at 1-800-224-4917 and ask to speak with Energy Services.



Don't wait: GenerLinks in stock

Now is the best time to secure a **GenerLink** transfer switch, which is in high demand during the summer months, and yes, supplies are limited.

GenerLink provides a quick, safe and easy way to connect a portable generator directly to your electrical system, without extension cords or unsafe backfeeding.

Give us a call at 1-800-224-4917 and ask to speak with Energy Services.



Don't wait: GenerLinks in stock

Now is the best time to secure a **GenerLink** transfer switch, which is in high demand during the summer months, and yes, supplies are limited.

GenerLink provides a quick, safe and easy way to connect a portable generator directly to your electrical system, without extension cords or unsafe backfeeding.

Give us a call at 1-800-224-4917 and ask to speak with Energy Services.



ABOUT POWER LINE

Power Line is Clay Electric Cooperative's monthly member publication. Questions or comments? Email Nick Jones (NJones@clayelectric.com) or write us at P.O. Box 308, Keystone Heights, FL 32656.

ABOUT POWER LINE

Power Line is Clay Electric Cooperative's monthly member publication. Questions or comments? Email Nick Jones (NJones@clayelectric.com) or write us at P.O. Box 308, Keystone Heights, FL 32656.

ABOUT POWER LINE

Power Line is Clay Electric Cooperative's monthly member publication. Questions or comments? Email Nick Jones (NJones@clayelectric.com) or write us at P.O. Box 308, Keystone Heights, FL 32656.