

Choose your own method to pay your electric bill

You have a variety of ways to make your electric bill payment. Although you can always pay your bill by mail or by visiting one of the co-op's district offices, there are several other convenient options as well.

Electronic Payments

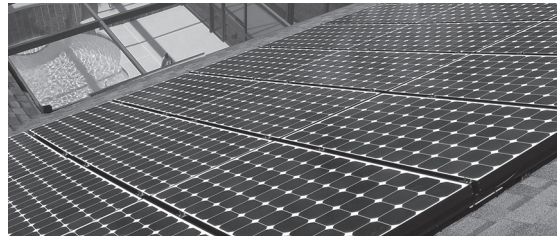
You can make an electronic payment on the co-op's website or by calling your local district office. If you prefer to handle the transaction over the phone, call your district office and use the interactive voice answering system. You do not have to talk with a customer service representative to make an electronic payment. You will need your Clay Electric account number, your bank account number and the routing number of your bank.

Credit/Debit Card Payments

All debit and credit card payments are processed through Western Union SpeedPay, an independent service provider. A processing fee of \$2.95 will be charged by Western Union SpeedPay. Clay Electric does not receive any portion of this fee. To make a credit or debit card payment, call Western Union SpeedPay at 1-888-822-0545 or visit the Co-op website to pay online.

Automatic Deduction from your Account

If you'd like your payment to be automatically deducted monthly on your due date by bank draft from your checking or savings account, the Automatic Monthly Payment Plan should be your choice. You can sign up online or call/drop by your local district office.



These photovoltaic panels generate electricity for a member served by Clay Electric Co-op.

Notify Clay Electric if you receive power from an alternative energy source

The State of Florida requires that Clay Electric keep track of the amount of electricity received via customer-owned alternative energy sources. At present, the co-op has more than 577 members who own renewable (solar) systems that generate electricity for their homes. These systems generate electricity for home use and excess power is returned to Clay's distribution system. Using a special meter, the co-op records the amount of electricity returned to the co-op's system.

If you own or plan to have one of these systems installed, please make sure you've signed an Interconnection Agreement with Clay Electric. If you plan to increase the size of your existing system, you must also let Clay Electric know.

The State of Florida requires that all customers who have systems that are or will be connected to the electrical grid have an Interconnection Agreement signed with the receiving utility. **It is the member's responsibility to notify Clay that they're operating or plan to operate an alternative energy system.** This is important for safety reasons and for billing purposes, and to ensure the member receives proper credit for putting power back into the co-op's distribution system.

Call the co-op's Energy Services Division at 352-473-8000 ext. 8366 for more information.

3040-25557

The Clay Electric Cooperative, Inc. _____

Power Line

February 2018

Join us for Annual Meeting on March 29

Clay Electric's 80th Annual Meeting will be held March 29 in Keystone Heights.

Members will find it to be an activity-filled day. There will be health screenings, a delicious grilled chicken lunch, energy-related exhibits and a chance to win a door prize. This year's grand prize is a pick up truck owned by the cooperative.


An important part of the day is the business portion of the meeting, which takes place beneath the big tent located alongside Highway 100.

Following a brief morning session which begins at 9 a.m., the polls open for members to cast their ballots to elect three members to Clay Electric's board of trustees. On Annual Meeting day, polls will remain open until 4 p.m.

The afternoon business session begins at 1 p.m. and will include comments by Board President Jo Ann Smith and General Manager/CEO Ricky Davis.

If you cannot make it to the Annual Meeting, you will still have the opportunity to vote in the trustee elections by mail. Stay tuned to the next *Power Line* bill insert and this month's *Kilowatt* for details.

 **Clay Electric Cooperative, Inc.** _____

A Triadstone Energy Cooperative 

MEMBER SERVICES

ONLINE ACCOUNT INFORMATION

Visit clayelectric.com to access your account information:

- View your bill statement/ account history
- Sign up for Average Billing Plan
- Make a one-time payment online
- View current charges & account balance
- View account balance
- View estimated meter reading dates
- Request emailed bill statements (Clay eBill)
- Sign up for automatic monthly payment plan
- Report your power outage:
<https://outagereport.clayelectric.com>

PROJECT SHARE - Help others by designating a tax-deductible amount to be added to your electric bill or make a one-time donation.

REMOTE METER READING (RMR) - Enables a co-op meter reader to obtain the meter reading without entering the homeowner's property. The monthly charge is \$1.95.

ENERGY SMART REBATE PROGRAM - Offers rebates for members who install additional insulation in their homes, or who install a high efficiency heat pump or solar water heating system.

ENERGY EFFICIENCY LOANS - Available for the purpose of installing certain energy efficiency measures, including metal roofing and solar water heaters.

SURGEBLASTER - High quality surge protection equipment at a low monthly lease.

PAYMENT STATIONS - Clay has contracted with Fidelity Express to offer payment stations for paying your electric bill at various businesses in the co-op's service area. Fidelity Express charges \$1.50 for each transaction. A list of payment locations is available at clayelectric.com and at your local district office.

CO-OP CONNECTIONS CARD - A national discount card program. It offers 10-60 percent discounts on prescription drugs at participating pharmacies, as well as special discounts and deals from local and national businesses!

What's this barcode on the back of my bill?

Checkout by PayGo is a way to pay your bill using cash

The co-op has a way to pay your electric bill using cash by using an account-specific barcode on the back of each bill.

This barcode payment method is called Checkout by PayGo and is offered through the PayGo company. Members can now pay their bills using the barcode at Dollar General Stores. Cash will be accepted at all locations. A convenience fee of \$1.95 will be added at checkout.

According to Checkout by PayGo, this payment program should be expanding to add more locations and vendors in the future.

PayGo is a real-time cash payment solution for co-op members.

Power out?

Report it online:
outagereport.clayelectric.com

Power Line is an informational publication of Clay Electric Cooperative, Inc. If you have questions or comments about the Power Line publication, contact Editor Kathy Richardson at P. O. Box 308, Keystone Heights, FL 32656; email: KRichardson@clayelectric.com.

Clay Electric's Board of Trustees will meet on Feb. 15 and March 27 beginning at 12:30 p.m. in Keystone Heights.

Members saving money with Co-op Connections Card

As of December 2017, co-op members have saved a total of \$178,000 on prescriptions with the Co-op Connections Card. The card can help you save on prescriptions that are not covered by insurance, and also offers great deals from local and national businesses, savings on online shopping, and more!

A wide variety of merchants throughout Clay Electric's 14-county service area accept the card. Be sure to present the card at the register to receive your discount! Clay Electric encourages its members to visit local businesses that participate in the Co-op Connections program.

As a Touchstone Energy co-op, Clay Electric strives to serve its members according to four core values: integrity, accountability, innovation and commitment to community.

Visit clayelectric.com and click on "member benefits" to learn more about the Co-op Connections card program.

Scholarships available this year

Clay Electric will offer at least 25 scholarships this year. Applications are due by April 2.

The scholarship program is limited to any public, private or homeschooled high school senior whose primary residence is served by Clay Electric and who will be graduating from high school at the end of the current school year (2017-2018).

The senior must be planning to attend an accredited college this fall. The one-time scholarship amount is \$1,000. An application is available on ClayElectric.com, at each of the co-op's six district offices and at area high schools.

Scholastic records, activities, employment, community service and recommendations are the primary considerations.